

GE Healthcare

The logical path to Lung Protection

CARESCAPE^{*} R860







It's nice to see a familiar interface

With the inception of the CARESCAPE R860, we were inspired to create a user interface that is inherently familiar the first time you use it.

Through hours of observational research and leveraging swipe screen touchscreen technology, we've designed a more human-centered user interface. By replacing menus with workspace views, the CARESCAPE R860 has flattened the learning curve and unlocked ventilation capabilities by making them more accessible and easier to use.

The end goal has always been to provide a clearer window to your patients. Through useful data to support clinical decisions and convenient workspaces that can be customized for each patient, you can confidently provide a logical path to Lung Protection.

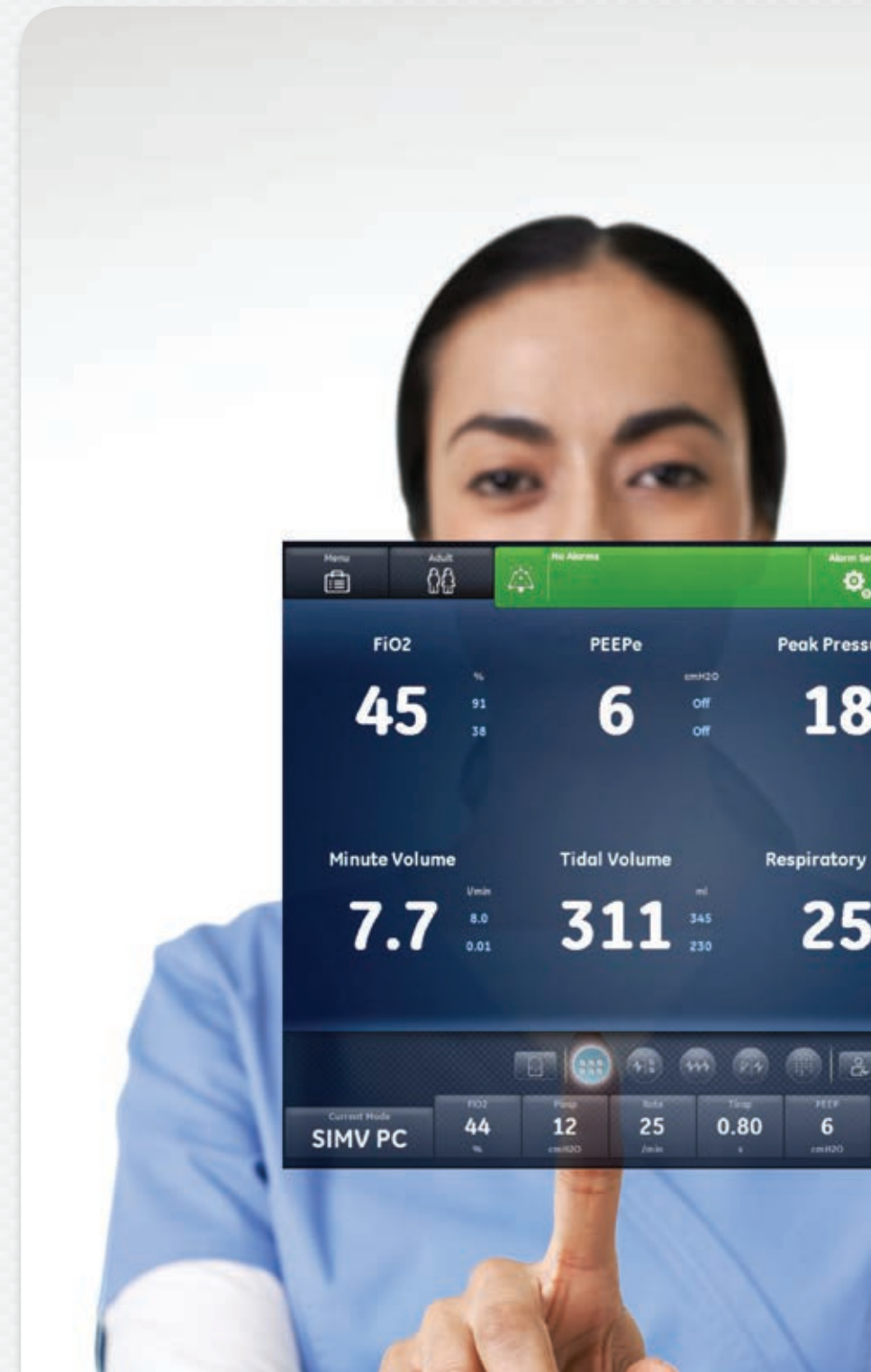
MENU-FREE NAVIGATION



The user interface on the CARESCAPE R860 represents a leap forward in our touchscreen technology. Intuitively organized and easily accessible, relevant clinical content and therapy controls are not buried in menus, they are at your fingertips.

Choose your view, you're the director

The user interface on the CARESCAPE R860 puts you in the director's chair through graphically dynamic views. From simple parameters and waveforms to robust clinical displays and historical trends, there's a view to help to suit your needs.





Travel through time with a single touch

With the CARESCAPE R860 user interface we have enabled you to freely switch between workspaces with either a single button touch or swipe from past on the left to future on the right to monitor your patient trends and access your Lung Protection tools.



PAST



PRESENT



FUTURE



Keep focus where needed

The CARESCAPE R860 has an event-centric historical data feature that allows you to easily access detailed patient data at a given point in time. Events can be expanded with the touch of a button to reveal important patient information.





CARESCAPE R86

Did you know?



Approximately

24%



of all patients mechanically ventilated will develop Ventilator Induced Lung Injury (VILI) for reasons other than ALI or ARDS.⁷



Gentler breaths for easy breathing

The lung is a delicate structure that is highly sensitive. Mechanical ventilation can be detrimental if too much volume or pressure is delivered. And patients affected by lung disease are highly susceptible to ventilation-associated lung injury.¹

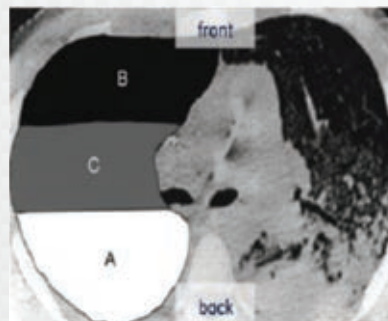
A LUNG PROTECTION STRATEGY CAN HELP ENSURE THE DIFFERENT ZONES RECEIVE THE TREATMENT THEY NEED

LUNG ZONE

- A Atelectasis
- B Baby healthy lung
- C Cycling opening/closing

CLINICAL NEED

- ▶ Keep the lung open^{2,3,4}
- ▶ Reduce tidal volume^{4,5}
- ▶ Stabilize the lung (PEEP)⁶



CT scan that shows uneven distribution of disease¹ Each zone has unique treatment needs.

A = Atelectasis B = Baby healthy lung
C = Cycling Opening/Closing

¹ E. D. Moloney and M. J. D. Griffiths, British Journal of Anaesthesia 92 (2): 261±70 (2004)

² Hedenstierna G, Acta Anaesthesiol Scand 2012, 56: 675-685

³ Gattinoni L, N Engl J Med 2006;354:1775-86

⁴ Brunner J, Intensive Care Med. 2009, 35:1479-83

⁵ Rouby JJ, Anesthesiology 2004; 101: 228-34

⁶ Gattinoni L, Current Opinion in Critical Care 2004, 10:272-278

⁷ International consensus conferences in intensive care medicine: Ventilator-associated Lung Injury in ARDS. This official conference report was cosponsored by the American Thoracic Society, The European Society of Intensive Care Medicine, and the Société de Réanimation de Langue Française, and was approved by the ATS Board of Directors, July 1999. Am J Respir Crit Care Med 1999; 160:2118.



Menu

Adult

No Alarms

Alarm Setup

O₂

Insp Hold

Exp Hold

Manual Breath

Evaluate

FRC INview

PEEP INview

FRC O₂

70

Start PEEP

4

End PEEP

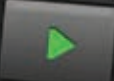
10

Steps

3

Step Time

10



Estimated Time

min

Lung INview

Leak compensation on

Current Mode

A/C VC

FI_{O2}

60

VT

475

Rate

16

PEEP

4

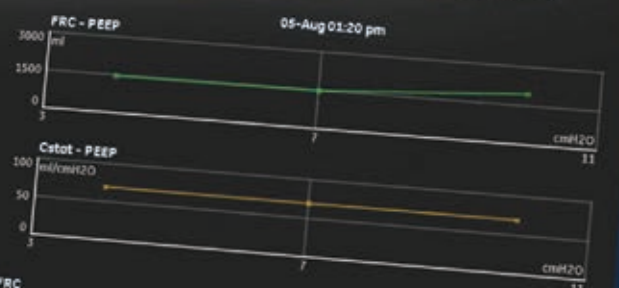
P_{max}

30

03:00 pm

STANDBY

SBT



The logical path to Lung Protection

CARESCAPE R860 is an intuitive ICU ventilator that offers a comprehensive solution for Lung Protection strategy by simplifying the use of advanced tools to assess patients' lung volume, check potential recruitability and titrate the appropriate PEEP.

CARESCAPE R860 OFFERS AN INTEGRATED SOLUTION



LUNG ZONE

- A Atelectasis
- B Baby healthy lung
- C Cycling opening/closing

CARESCAPE R860 ADVANCED TOOLS

- FRC & static compliance ▶ FRC INview[®]
- P-V curve ▶ SpiroDynamics
- PEEP titration & Vd/Vt ▶ PEEP INview & Vent Calcs



[®] Chlumello D, Crit Care Med 2008, 12:R150 doi:10.1186/cc7139



CARESCAPE R860

The logical path to Lung Protection

PAST

TRENDS



Graphic Trends



Numerical Trends



Trends Log



Snapshot Trends

PRESENT

STATUS



Basic



Basic Waveform



Advanced Waveform



Split Screen



Charting

FUTURE

CLINICAL DECISION SUPPORT



SBT



FRC



Spiro



Metabolics



Calc

Connecting intelligence and care

This is the vision of our CARESCAPE platform. For caregivers, this means a user interface that is designed to improve access to core functions and open a window to the patient. From respiratory care to patient monitoring, with CARESCAPE we contribute to suit the needs of clinical users regardless of experience or title.



CARESCAPE R860

Uncompromised ventilation – along with touches of brilliance – now you can have it all

- A Alarm light
- B 15" Touch display
- C Integrated keypad & trim knob
- D Optional airway module bay (mounted either side)
- E Inspiratory safety guard
- F Ventilator lock
- G Dovetail to support adjustable mounting rail (on both sides)
- H Locking casters (all wheels lock)



www.gehealthcare.com

GE Healthcare provides transformational medical technologies and services that are shaping a new age of patient care.

Our broad expertise in medical imaging and information technologies, medical diagnostics, patient monitoring systems, drug discovery, biopharmaceutical manufacturing technologies, performance improvement and performance solutions services help our customers to deliver better care to more people around the world at a lower cost.

In addition, we partner with healthcare leaders, striving to leverage the global policy change necessary to implement a successful shift to sustainable healthcare systems.

Imagination at work

GE Healthcare
P.O. Box 900, FIN-00031 GE, Finland
GE Direct United Kingdom: +44 (0)800 0329201

www.gehealthcare.com

Data subject to change.
Marketing Communications GE Medical Systems
Société en Commandité Simple au capital de 85.418.040 Euros
283 rue de la Minière - 78533 Buc Cedex France
RCS Versailles B 315 0130359
A General Electric Company, doing business as GE Healthcare.

GE and GE monogram are trademarks of General Electric Company
*Trademark of General Electric company

©2014 General Electric Company. All rights reserved.

JB23620GB 9/14