

A healthcare professional in a white lab coat is shown in profile, holding a smartphone and showing the screen to a patient. The patient is a woman with long brown hair, wearing a light blue button-down shirt. They are in a clinical setting with dark wood cabinets and a desk with a computer monitor in the background. The smartphone screen displays an ultrasound image.

PHILIPS

Ultrasound

Lumify

Lumify: Philips ultrasound on your compatible **smart device**. Ready when you are.



An exciting breakthrough in **point-of-care** imaging technology.

Lumify is the app-based mobile ultrasound system that brings Philips-quality imaging to your compatible smart device.

Bring the technology directly to your patients when it's needed, for faster diagnosis and treatment.

Our subscription model makes it easy to get started. With three simple steps you're ready to go.

1



Download
the Lumify app to
your smart device*.

2



Connect
the Lumify transducer
to your compatible
smart device.

3



Scan
with the exceptional
quality of Philips
imaging technology.

* See Lumify portal for the list of compatible smart device options, www.philips.com/lumify-compatible-devices.





Lumify combines all the advantages of Philips innovation to bring you truly mobile ultrasound capability.

Subscribe, connect, scan and share images from your compatible smart device or phone.



Our transducers and mobile app incorporate decades of expertise and innovation in ultrasound imaging to help you make informed decisions.

Quality imaging

Our C5-2 and L12-4 transducers deliver exceptional image quality and reliable performance.

High-quality ultrasound imaging is now available on your compatible smart device with Lumify, the mobile app and hardware solution from Philips. Our L12-4 transducer supports a variety of clinical applications, including soft tissue, musculoskeletal, lung and vascular scanning. The C5-2 offers abdominal with lung and gallbladder presets and Ob/Gyn capabilities.

Simple connectivity

Lumify makes it easy to share information and collaborate with colleagues and specialists.

Philips Lumify mobile ultrasound gives you the power to quickly send and share images, notes and diagnostic data via DICOM to PACS, a shared network or a local directory. It's a dependable and comprehensive point-of-care solution that brings simplicity, mobility and flexibility to ultrasound technology.

Flexible subscription pricing

Subscription-based purchasing makes it easy and inexpensive to get started.

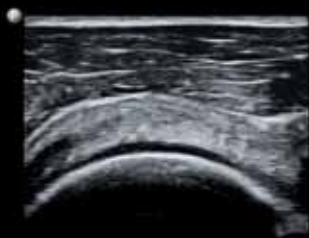
Your subscription begins with a 30-day trial period so you can experience firsthand the quality, flexibility and mobility of Philips Lumify ultrasound. When you subscribe, you'll receive:

- A Philips Lumify transducer
- Lumify app
- Ongoing hardware and software upgrades
- Manufacturer's warranty on the hardware
- Access to Philips service and education.

Lumify brings three decades of **imaging expertise** and innovation to point-of-care practitioners.



Just plug the transducer into the **USB port** of your compatible smart device and you're ready to begin scanning.



Rotator cuff/shoulder



Carotid



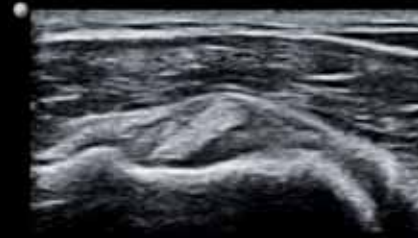
Gallbladder



Carotid artery and jugular vein



Kidney cyst



Biceps tendon

Philips Lumify offers quality and flexibility with the C5-2 broadband curved array transducer and L12-4 linear array transducer. Just plug the transducer into the **USB port** of your compatible smart device and you're ready to begin scanning.



For more information about the flexibility, simplicity and quality of Lumify ultrasound, visit Philips.com/lumify or call 1-844-MYLUMIFY.

© 2015 Koninklijke Philips N.V. All rights are reserved.
Philips reserves the right to make changes in specifications and/or to discontinue any product at any time without notice or obligation and will not be liable for any consequences resulting from the use of this publication. Trademarks are the property of Koninklijke Philips N.V. (Royal Philips) or their respective owners.



www.philips.com/lumify

Printed in The Netherlands.
4522 991 13871 * DEC 2015