



# Trilogy ventilator

Patient leaflet

**PHILIPS**  
RESPIRONICS



## Your ventilator

### **The Trilogic ventilator will continuously support you**

Trilogic provides continuous respiratory support up to 24 hours a day, 7 days a week.

### **Trilogic ventilator will be with you wherever you go.**

Trilogic is a portable ventilator weighing less than 5kg. It is fitted with both internal and detachable batteries, providing up to 6 to 8 hours of autonomy. Additional detachable batteries are available to provide you with continuous autonomy for more freedom. The internal battery secures your ventilatory support with an additional back up power source should the detachable battery run out of power.

### **Trilogic ventilator will allow your physician to have a closer look into your respiratory therapy and ensure you receive the best care.**

Trilogic includes an SD card that can record up to one year of data so that physicians have a complete view of your breathing patterns and can make any necessary adjustments to maintain the best possible therapy.

# Set-up

## 1 Connect your circuit to the air outlet

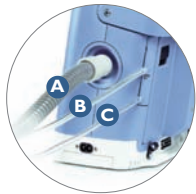
### Passive Circuit



If you have a single tube, you simply need to connect the tube to the air outlet. An exhalation port will need to be connected directly to your tracheostomy tube or mask (unless your mask already has an integrated leak\*).

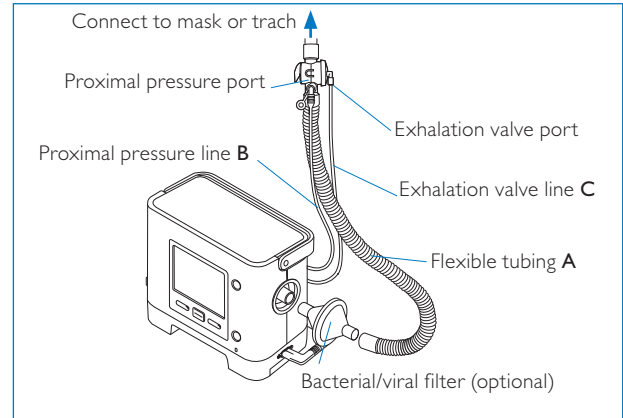
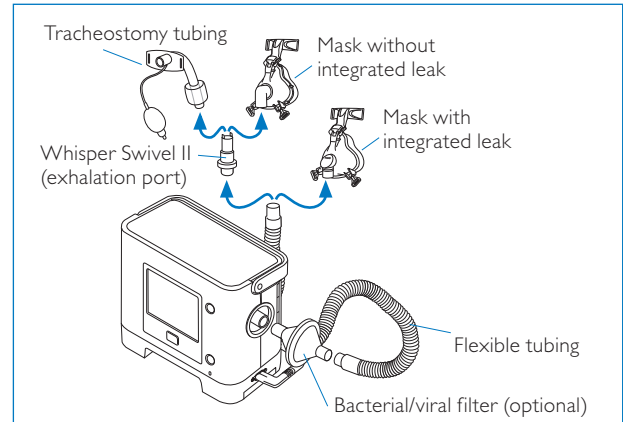
\* It is important to make sure that the leak hole is not blocked off to allow exhalation.

### Active Circuit



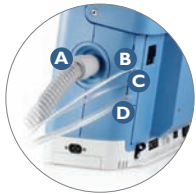
If using the circuit with a valve:

- Connect tube **A** to the air outlet.
- Connect pressure line **B** to the top connector.
- Connect valve line **C** to the bottom connector.
- Connect to the valve and to your mask or tracheostomy tube.



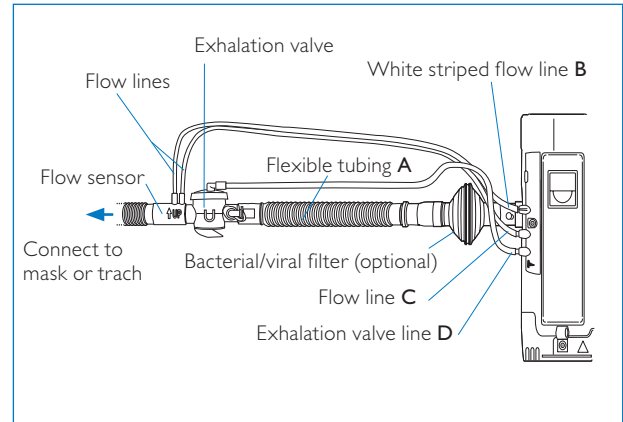
# Set-up (cont.)

## □ Active Flow Circuit



If using the valve circuit with flow sensor:

- Connect tube **A** to the air outlet.
- Connect flow lines **B** and **C** to the top connectors (white striped flow line on top).
- Connect exhalation valve line **D** to the bottom connector.
- Connect to the valve, to the flow sensor, and then to your mask or tracheostomy tube.



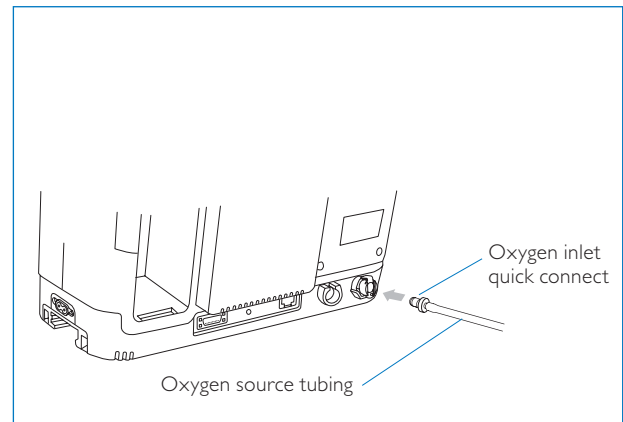
2

## Connect your oxygen supply

If you have been prescribed supplemental oxygen, connect the oxygen source to the oxygen inlet located at the back of the ventilator.



Turn on the oxygen source to the prescribed flow rate.\*

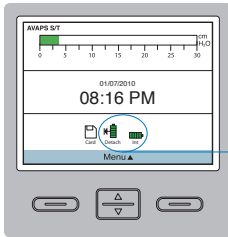
\* Check your prescribed flow rate in the **"Prescription (2)"** section.



# Getting started




## To start your ventilation

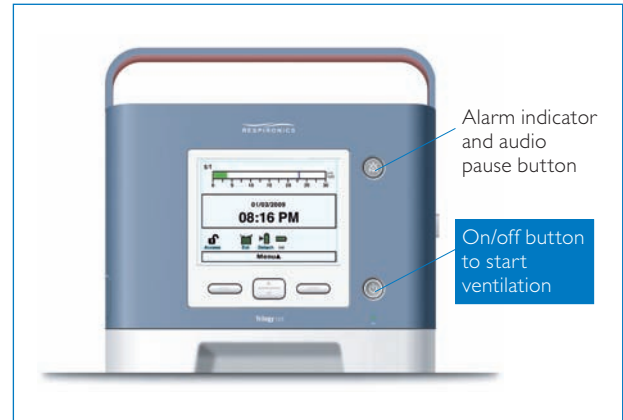
- 1 Press the **on/off**  key to start ventilation.
- 2 Scroll up or down  to access the set up menu.
- 3 Always check the power supply.



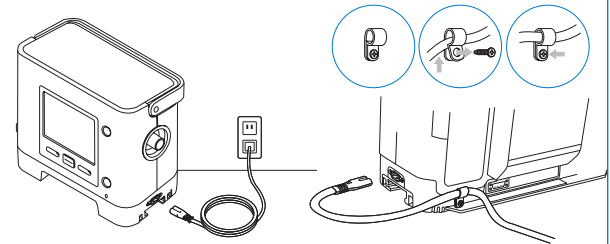
Make sure the internal battery is charged and the detachable battery is at least partially charged, or plug the ventilator to AC power.

### Battery power

-  Shows battery is fully charged
-  Shows battery is charging
-  Shows battery is empty

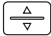


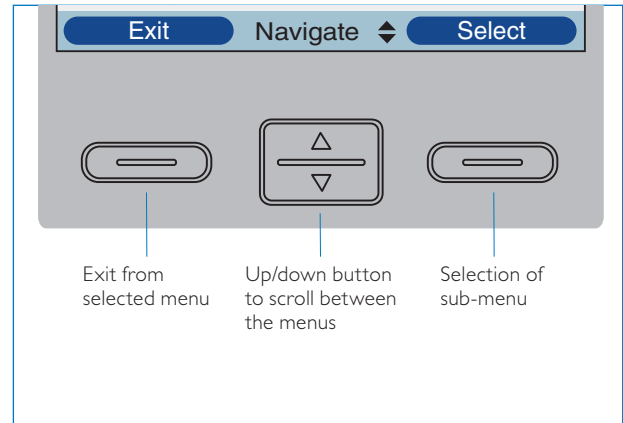
To secure the power cord, use the cord retainer as shown below.



# Navigation

## To navigate between the different menus

- 1 Press **Exit** to go back to main screen.
- 2 Scroll up or down  to go through sub-menus or change settings.
- 3 Press **Select** to enter a sub-menu and confirm settings.

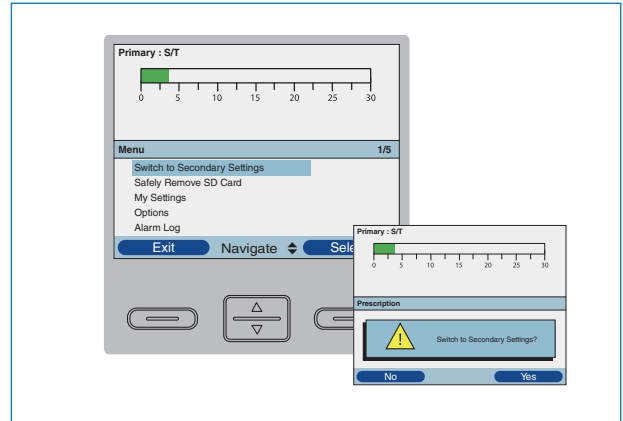


# Change settings

## To switch to secondary settings

- 1 If you have a dual prescription\*, navigate to “**switch to primary/secondary settings**” to switch from one ventilation mode to another.
- 2 Confirm your selection when prompted.

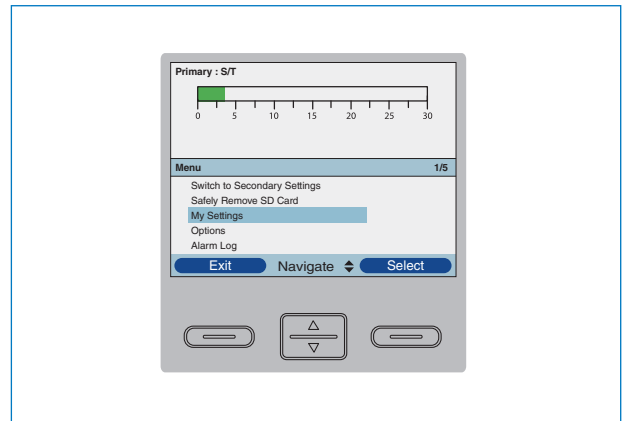
\* Please refer to the “**Prescription (2)**” section to check when to switch from primary to secondary settings.



## To modify my settings

- 1 The “**My Settings**” sub-menu gives you access to comfort settings\*.

 \* Do not modify comfort settings without the advice of your physician.

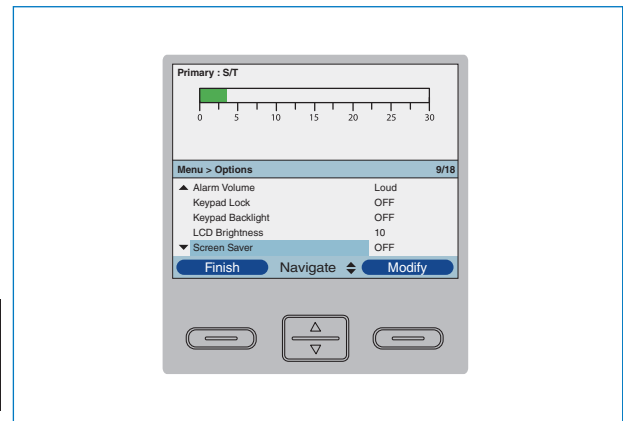
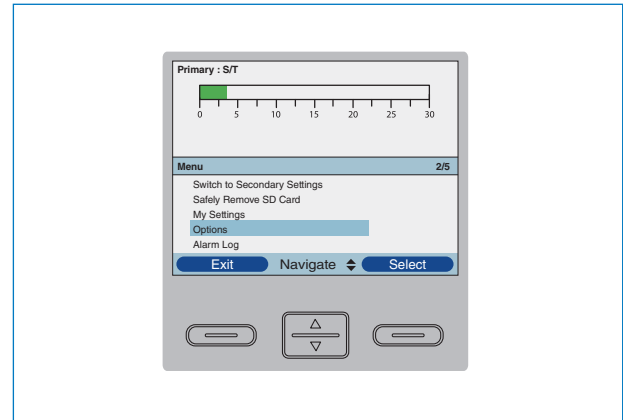
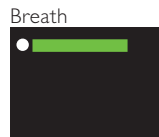


# Configure your ventilator

## To modify the options of your ventilator

The **Options** menu allows you to configure your Trilogy according to your needs and preferences.

- **Alarm volume** can be set to *loud* or *soft*.
- **Keypad lock** allows you to disable the front keys panel during operation to avoid inadvertently changing the settings when the unit is on.
- **Keypad backlight** can be enabled or disabled.
- **LCD brightness** can be set from *dim (1)* to *bright (10)*.
- **Screen saver** (active after 5 minutes of no keypad activity):
  - *Off* (no screen saver)
  - *Breath* (only the bar graph appears, as shown here)
  - *Black* (black screen)
  - *Dim* (dimmed screen)

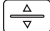


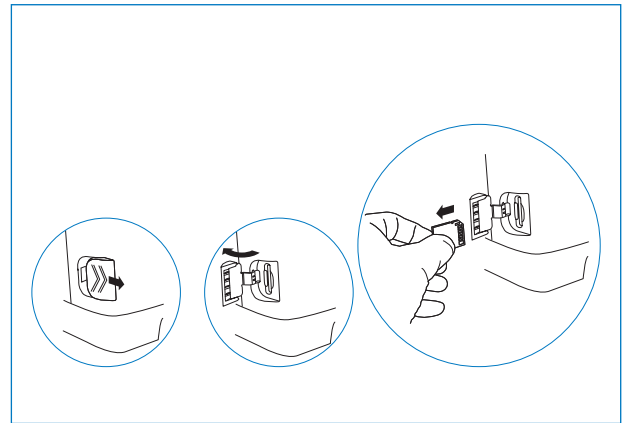
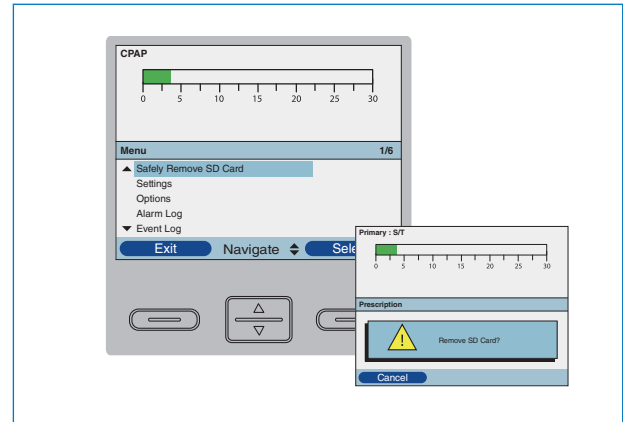


# SD card

## To remove your SD card

If your homecare provider or physician asks you to send your SD card to review your therapy, carefully follow the next steps:

- 1 Navigate through the menu  to “safely remove the SD card”.
- 2 Confirm your selection when prompted.
- 3 Open the door at the left side of the ventilator and remove the SD card.
- 4 Place the SD card in a protected mailer and return to your homecare provider or physician.



# Prescription (1)

## Circuit type

Passive

Active

Active flow

## Ventilation mode

Pressure modes:

CPAP

S

S/T

T

PC

PC-SIMV

Volume modes:

VC

AC

SIMV

AVAPS-AE

MPV

## Ventilation parameters

A. If pressure mode selected

IPAP  cmH<sub>2</sub>O

SIMV

If SIMV selected:

Pressure support  cmH<sub>2</sub>O

B. If AVAPS is on

Target Vte  ml

AVAPS rate

IPAP min  cmH<sub>2</sub>O

IPAP max  cmH<sub>2</sub>O

C. If volume mode selected

V<sub>t</sub>  ml

Flow pattern  ramp  square

Sigh  on  off

SIMV

If SIMV selected:

Pressure support  cmH<sub>2</sub>O

D. If AVAPS-AE selected

AVAPS rate

Target Vte  ml

Max pressure  cmH<sub>2</sub>O

Pressure support max  cmH<sub>2</sub>O

Pressure support min  cmH<sub>2</sub>O

EPAP max  cmH<sub>2</sub>O

EPAP min  cmH<sub>2</sub>O

EPAP  cmH<sub>2</sub>O

RR  BPM

Ti  sec

## Trigger

Flow

LPM

Cycling %

AutoTRAK

# Prescription (2)

## Alarms

- Disconnect  sec
- Low insp pressure  cmH<sub>2</sub>O
- High insp pressure  cmH<sub>2</sub>O
- Apnea  sec
- Apnea rate  BPM
- Low Vt  ml
- High Vt  ml
- Low minute ventilation  l/min
- High minute ventilation  l/min
- Low respiratory rate  BPM
- High respiratory rate  BPM

## Double prescription

Primary settings from:  H  to  H

Secondary settings from:  H  to  H

### Notes


## Oxygen supply

Oxygen rate  LPM

# Alarms

To silence alarm, press alarm indicator/ audio pause button  or press left (reset) button to reset alarm.

Screen display or error	User action
Loss of power	Press <b>start/stop</b> button.
Device shuts down	If using AC power, try plugging device into alternate AC power source. If loss of power continues, connect a fully charged detachable or external battery to the device or connect patient to an alternate source of ventilation while contacting homecare provider or healthcare specialist.
Low battery	Switch to an alternate battery, or switch to AC power source and recharge low battery.
Ventilator inoperative	Select <b>right</b> button to shut off device and silence alarm. Connect patient to alternate source of ventilation and contact homecare provider or healthcare specialist.
Ventilator service required	The machine has to be serviced. Connect patient to alternate source of ventilation and contact your healthcare professional as soon as possible.
High temperature, or battery not charging due to high temperature	Make sure tubing is not under any bedding. Check inlet filter and clean or replace it if needed. Make sure cooling vents are not blocked. If the ventilator is running off of the internal or detachable battery, move to a cooler location and/or power the device with AC power or a lead-acid battery.
High or low expiratory pressure	Make sure tubing is not kinked or pinched. If alarm continues, clinician should verify patient status.
High Vt or low Vt	Press <b>left (reset)</b> button to reset alarm. If alarm continues, clinician should verify patient status.

If the alarm continues, contact homecare provider or healthcare specialist.

# Alarms (cont.)

To silence alarm, press alarm indicator/ audio pause button  or press left (reset) button to reset alarm.

Screen display or error	User action
Apnea	If using an active circuit, check proximal pressure line to ensure it is not pinched or has water condensation. If alarm continues, clinician should verify patient status.
Check circuit	Check patient circuit to make sure it is set up as your healthcare professional specified (check circuit <b>set-up</b> section). Make sure there is no kinked or pinched tubing. Make sure tubing is properly attached. Make sure all tubing and exhalation devices are clean and free of condensation. If using active exhalation circuit, make sure diaphragm is inserted correctly and is not wrinkled or kinked.
Low Circuit Leak	If using a mask with integrated leak port, check to make sure leak holes are not obstructed. If using a mask without integrated leak or a trach, make sure the circuit is correctly set up and the exhalation port is well connected. Make sure exhalation device is clean and functioning properly.
Circuit Disconnect	Check breathing circuit and reconnect it if it has become disconnected, check mask seal or tracheostomy connection, or fix the leak.
High Internal Oxygen	Disconnect supplemental oxygen from device. Check external oxygen connection; reconnect. If alarm continues, disconnect supplemental oxygen and contact your homecare provider or healthcare specialist.

**If the alarm continues, contact homecare provider or healthcare specialist.**

When you hear or see a high priority alarm, respond immediately, as a high priority alarm alerts you to critical issues with the patient's breathing or the ventilator's operation. Always look at the patient before attending to the equipment to ensure that he or she is being properly ventilated. When you are sure the patient is stable, turn your attention to the ventilator.

# Cleaning

## To clean your Trilogy

Make sure the device is unplugged before cleaning it.

Use a damp cloth and a soft detergent to clean the front panel and exterior of the enclosure.

Do not allow any liquid to drip into the ventilator case or detachable battery pack.

After cleaning, use a soft, dry cloth to remove any residual cleaner.

Use extra care when cleaning the display as abrasive cleaners can scratch the display.

Allow the device to dry completely before plugging in the power cord.

---

## Caring for your filter

Remove the filter from the enclosure.

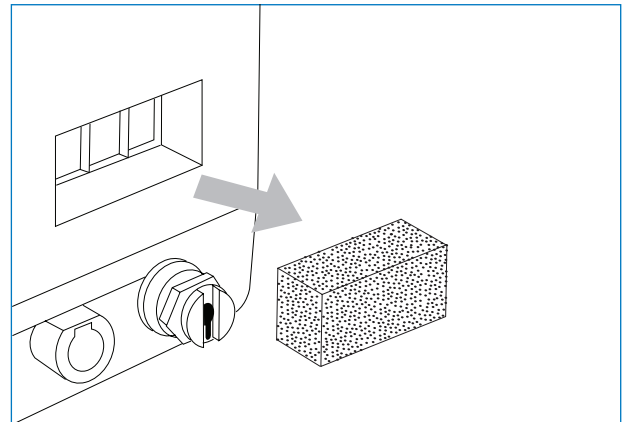
Examine the filter for cleanliness and integrity.

Wash in warm water with a mild detergent.

Rinse thoroughly to remove all detergent residue.

Allow the filter to air dry completely before reinstalling it.

If the foam filter is torn or damaged, replace it.





## How to reach us

[www.philips.com/healthcare](http://www.philips.com/healthcare)  
[healthcare@philips.com](mailto:healthcare@philips.com)

### Asia

+49 7031 463 2254

### Europe, Middle East, Africa

+49 7031 463 2254

### Latin America

+55 11 2125 0744

### North America

+1 425 487 7000

800 285 5585 (toll free, US only)

Philips Respironics

1010 Murry Ridge Lane

Murrysville, PA 15668 USA

Philips Respironics Asia Pacific

+65 6882 5282

Philips Respironics Australia

+61 (2) 9947 0440

1300 766 488 (toll free, Australia only)

Philips Respironics Benelux

+33 1 47 28 30 83

Philips Respironics Canada

+1 724 387 4000

+1 800 345 6443

Philips Respironics China

+86 400 828 6665

+86 800 828 6665

Philips Respironics Deutschland

+49 8152 93 06 0

Philips Respironics France

+33 2 51 89 36 00

Philips Respironics Iberia

+34 91 566 90 00

Philips Respironics Italy

+39 039 203 1

Philips Respironics Sweden

+46 8 120 45 900

Philips Respironics Switzerland

+41 6 27 45 17 50

Philips Respironics United Kingdom

+44 800 1300 845

[www.philips.com/respironics](http://www.philips.com/respironics)

Philips Respironics, BiPAP and AVAPS are trademarks of Koninklijke Philips N.V., all rights reserved.

Please visit [www.philips.com/respironics](http://www.philips.com/respironics)



© 2015 Koninklijke Philips N.V.

All rights are reserved.

Philips Healthcare reserves the right to make changes in specifications and/or to discontinue any product at any time without notice or obligation and will not be liable for any consequences resulting from the use of this publication.

Broudy RP 2/16/15 MCI 4106559 PN 1080921